

1 PLAN
SCALE 1/8" = 1'-0"

FIRST FLOOR PLANSOUTH
CONCESSION & RESTRM BLDG - LINGSTON AVE



Plan Legend

- NEW DOOR
- NUMBERED CODED NOTES SEE LIST THIS SHEET
- LETTERED CODED NOTES SEE LIST THIS SHEET
- SCHEDULE ON SHEET
- WALL TYPE MARK SEE SCHEDULE ON PLAN APPLIES TO ALL WALL LINE TOUCHES

Walltype Schedule

NO.	AS-BUILT DESCRIPTION	SIC	STC	FINISH	TERMINATION SQUARES
1	4" CONCRETE MASONRY UNITS	0	HR	0	TOP SURFACE CONCRETE SCREIN FINISH
2	6" CONCRETE MASONRY UNITS	0	HR	0	TOP SURFACE CONCRETE SCREIN FINISH
3	8" CONCRETE MASONRY UNITS	0	HR	0	TOP SURFACE CONCRETE SCREIN FINISH
4	8" CONCRETE MASONRY UNITS	0	HR	0	TOP SURFACE CONCRETE SCREIN FINISH
5	8" CONCRETE MASONRY UNITS	0	HR	0	TOP SURFACE CONCRETE SCREIN FINISH
6	8" CONCRETE MASONRY UNITS	0	HR	0	TOP SURFACE CONCRETE SCREIN FINISH
7	8" CONCRETE MASONRY UNITS	0	HR	0	TOP SURFACE CONCRETE SCREIN FINISH
8	8" CONCRETE MASONRY UNITS	0	HR	0	TOP SURFACE CONCRETE SCREIN FINISH
9	8" CONCRETE MASONRY UNITS	0	HR	0	TOP SURFACE CONCRETE SCREIN FINISH
10	8" CONCRETE MASONRY UNITS	0	HR	0	TOP SURFACE CONCRETE SCREIN FINISH
11	8" CONCRETE MASONRY UNITS	0	HR	0	TOP SURFACE CONCRETE SCREIN FINISH
12	8" CONCRETE MASONRY UNITS	0	HR	0	TOP SURFACE CONCRETE SCREIN FINISH

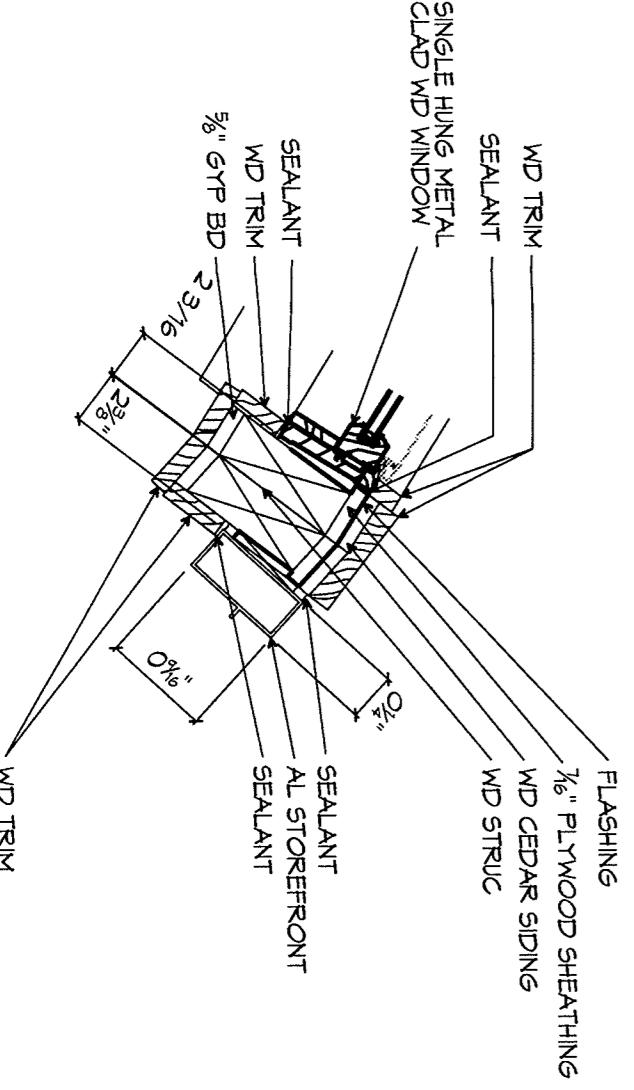
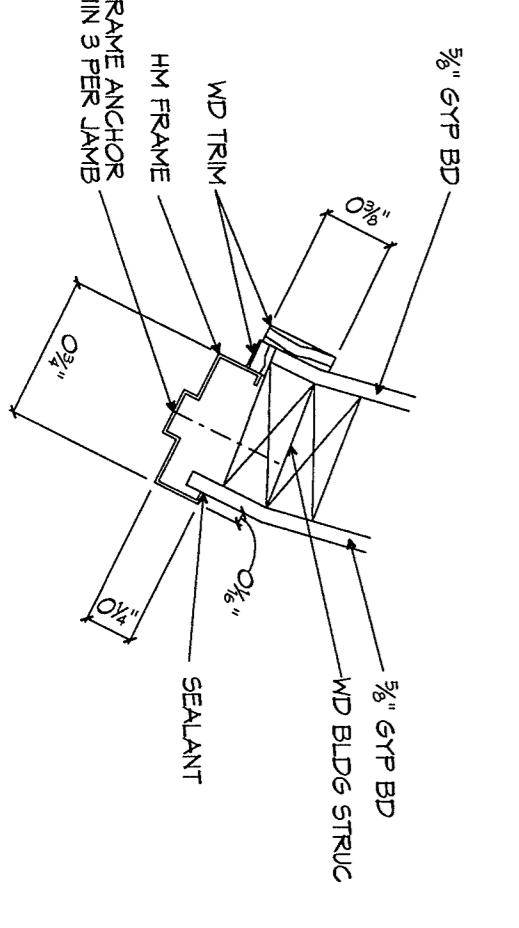
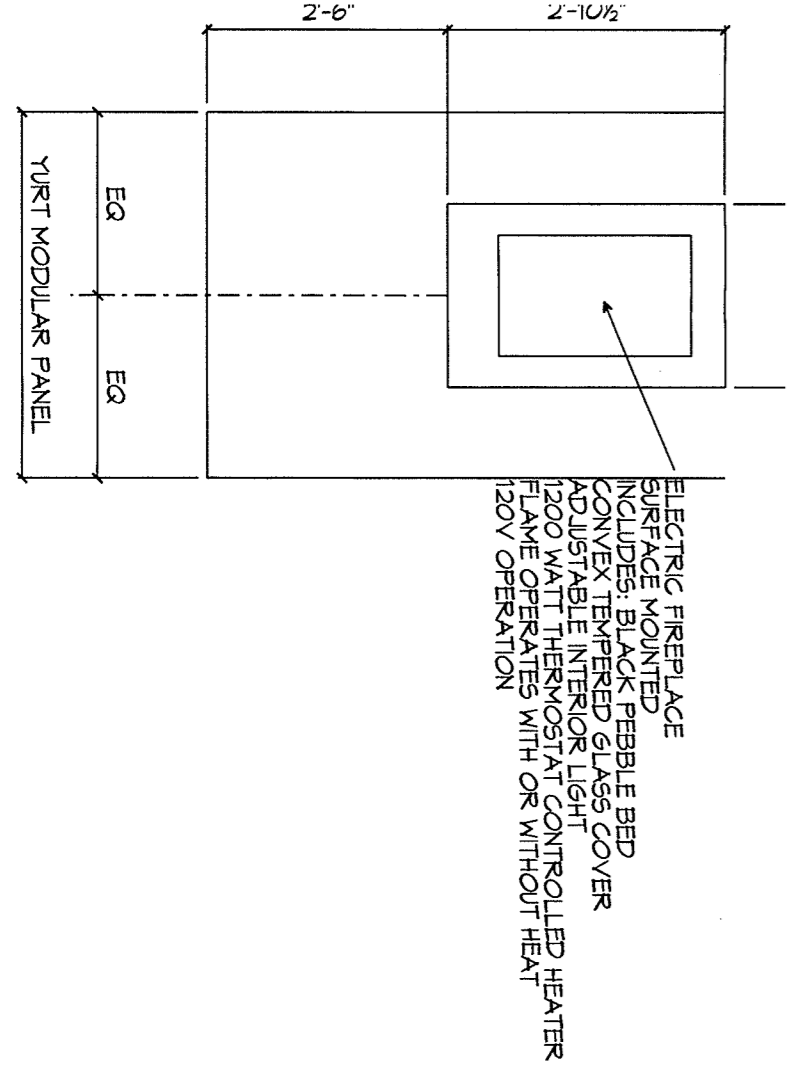
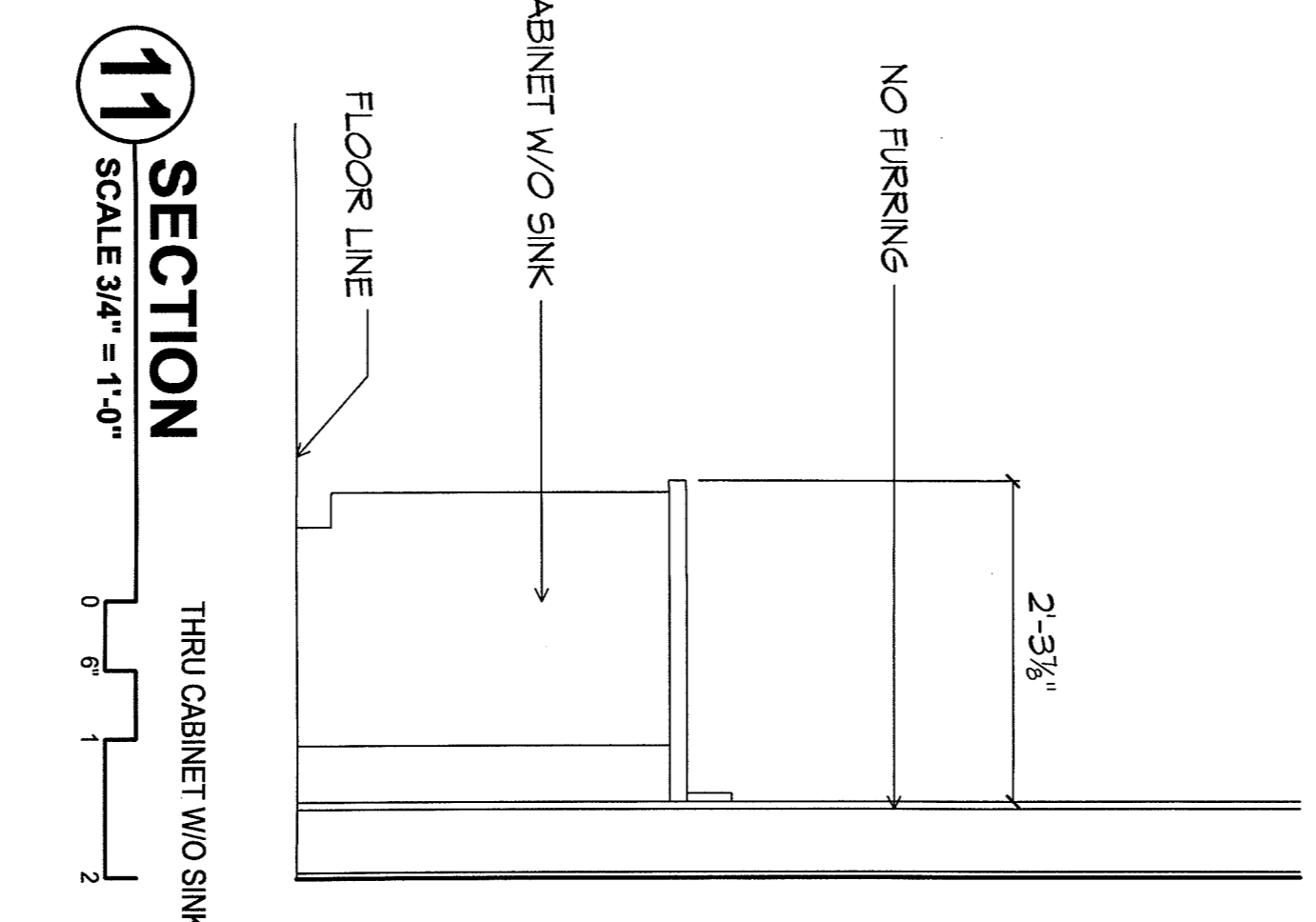
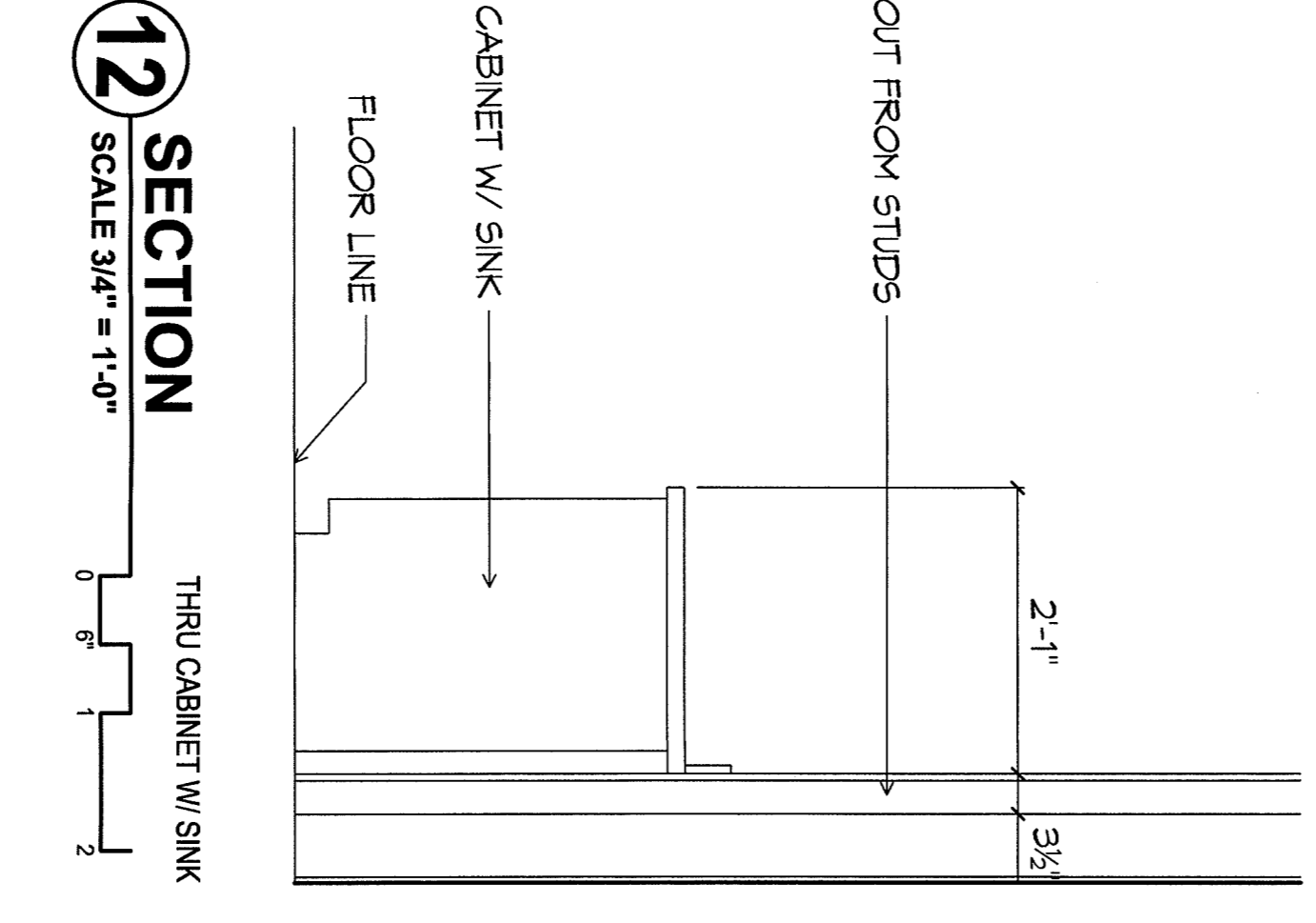
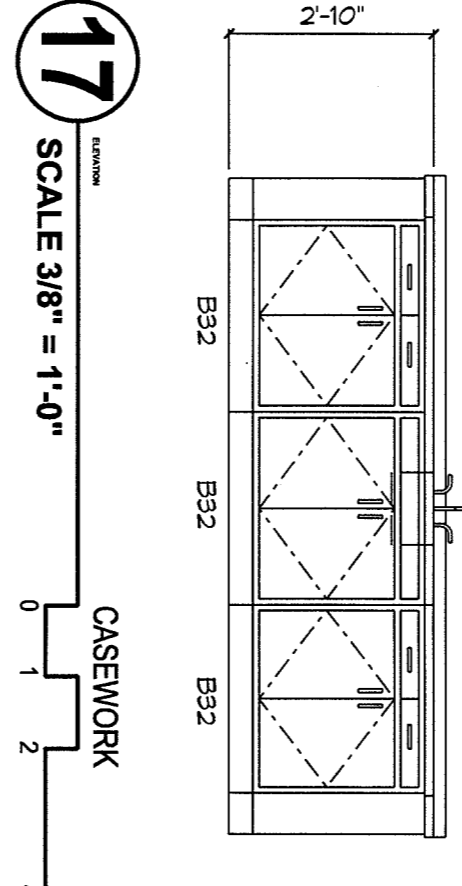
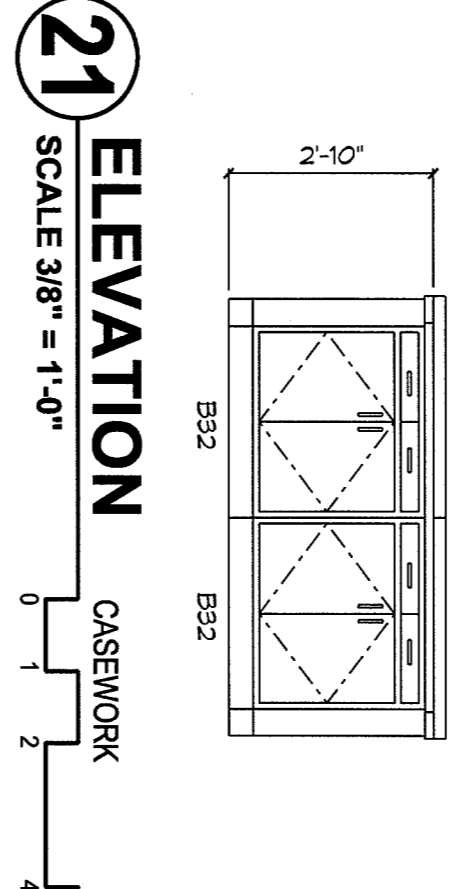
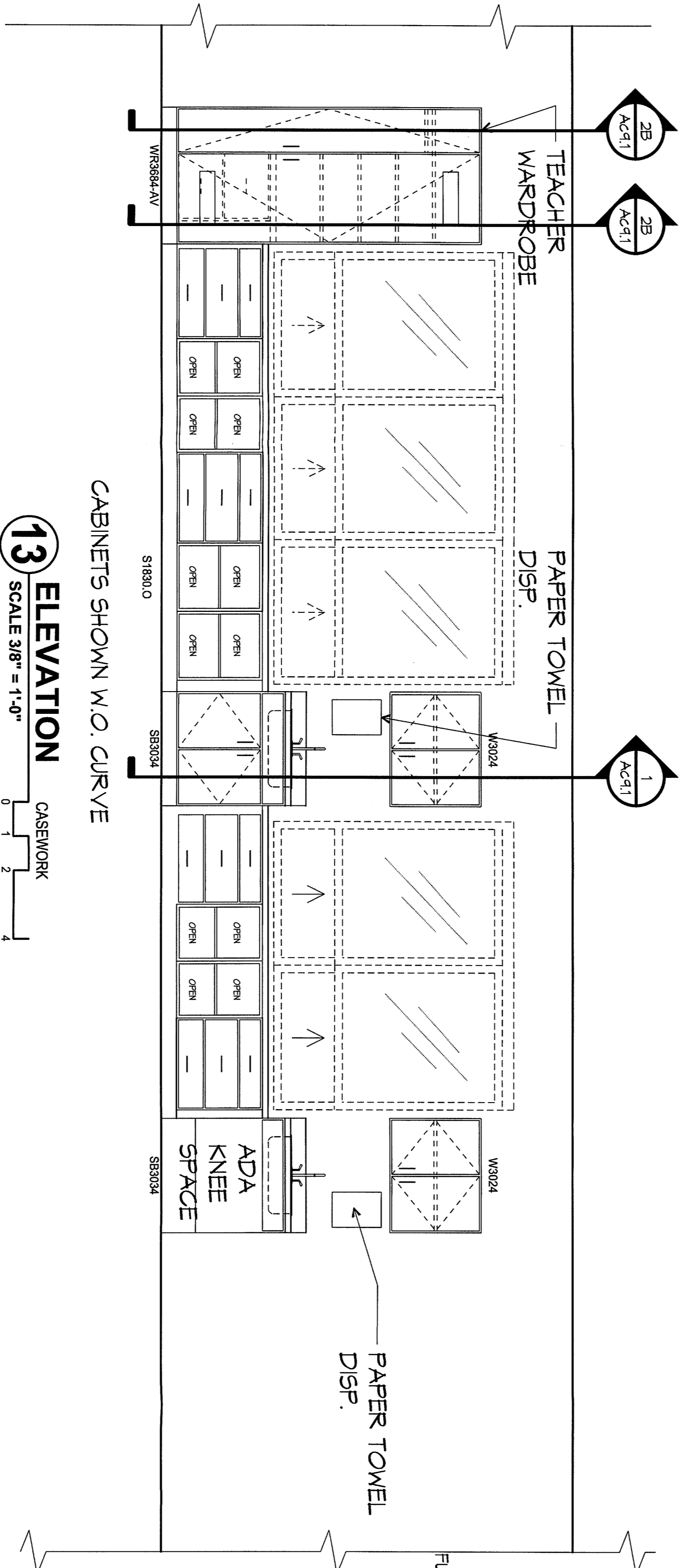
General Notes

1. SEE DWGS 8 & 9 / A&B 2 FOR REPROTECTED METAL CLOSURE FOR ALL OPEN PIPE CHASES
2. SEE DWG 10 FOR DETAILS
3. MINIMUM CLEARANCE TO TOP OF STALLS
4. SEE DWG 2 FOR FLUENTS & OTHER MOUNTING HTS
5. SEE DWG 3 / A&B 3, 5, 6 & 8 FOR MOVEMENT DETAILS

Reynoldsburg City Schools
F.O. Athletic & ECO Lab
Projects
2444 East Street
Reynoldsburg, Ohio 43088

300 Spruce Street
Phone: (614) 431-4444
Columbus, Ohio 43215
www.moodynolan.com

1ST FL PLAN
CONCESSION & RESTRM BLDG
LINGSTON AVE
Aa1.1
08177.1.08177.3
MAY 17 2011



#	Date	Change Description
1	March 25, 11	Addressed No. 1

Reynoldsburg City Schools
 F.O. Athletic & ECO Lab
 2444 Elm Street
 Reynoldsburg, Ohio 43085

300 Square Street
 Suite 300
 Columbus, Ohio 43215
 Phone: (614) 481-1800
 Fax: (614) 290-3881
 www.moodynolan.com

MOODYNOLAN ARCHITECTS

MISC DETAILS
 ECO-LAB-SUMMIT RD
 AC8.2
 4/4/11-3/2/2011

ADDENDUM NO. 1

Project:

VOL. 1 & 2

REYNOLDSBURG CITY SCHOOLS
L.F.O. ATHLETIC & ECO LAB PROJECTS

7244 East Main Street
Reynoldsburg, OH 43068

REYNOLDSBURG CITY SCHOOLS
REYNOLDSBURG, OHIO

Index of Contents:

Addendum No. 1:

PART 1 - PROJECT MANUAL
PART 2 - DRAWINGS
PART 3 - ATTACHMENTS

Total Number of Pages: 4

Date: March 25, 2011

I hereby certify that this Addendum was prepared by me or under my direct supervision and that I am a duly registered Architect under the Laws of the State of Ohio:

Moody Nolan, Inc.
300 Spruce St. Suite 300
Columbus, OH 43215
(614) 461-4664
(614) 280-8881
Brent Wilcox, Project Manager

TO: ALL PLANHOLDERS OF RECORD

Addendum No. 1 to the Drawings and Project Manual, dated **March 17, 2011**, for **L.F.O. ATHLETIC & ECO LAB PROJECTS**, Reynoldsburg City Schools, 7244 East Main Street, Reynoldsburg, Ohio 43068; as prepared by Moody Nolan, Inc., 300 Spruce St. Suite 300, Columbus, OH 43215.

This Addendum shall hereby be done and become part of the Contract Documents the same as if originally bound thereto.

The following clarifications, amendments, additions, revisions, changes, and modifications change the original Contract Documents only in the amount and to the extent hereinafter specified in this Addendum.

Each Bidder shall acknowledge receipt of this Addendum in his proposal or bid.

NOTE: Bidders are responsible for becoming familiar with every item of this Addendum.

PART 1 - PROJECT MANUAL:

Item 1-1 **INSTRUCTIONS TO BIDDERS**

A. REVISE PARAGRAPH D.1 WORK AS FOLLOWS:

1. The Project consists of the following contract(s) for the work on the Project:

	<u>Bid Package</u>	<u>Estimated Construction Cost</u>
201	General Trades	\$2,300,000.00
202	Plumbing	\$275,000.00
203	Fire Protection	\$27,000.00
204	HVAC	\$130,000.00
205	Electrical/Technology	\$775,000.00

B. REVISE PARAGRAPH E.1 ESTIMATE OF COST AS FOLLOWS:

1. The total estimated construction cost for the base bid Work for the Project for which bids are being solicited at this time is \$3,507,000.00.

Item 1-2 **SPECIFICATIONS DIVISIONS 0-13: SECTION 06 20 00, FINISH CARPENTRY**

- A. REVISE:** PART 1 GENERAL, 1.01 WORK INCLUDED, A.3.A, modify note "Utility shelving (janitor closets), painted finish." to "Utility shelving (janitor closets & Room a107, Long Term Storage), painted finish."

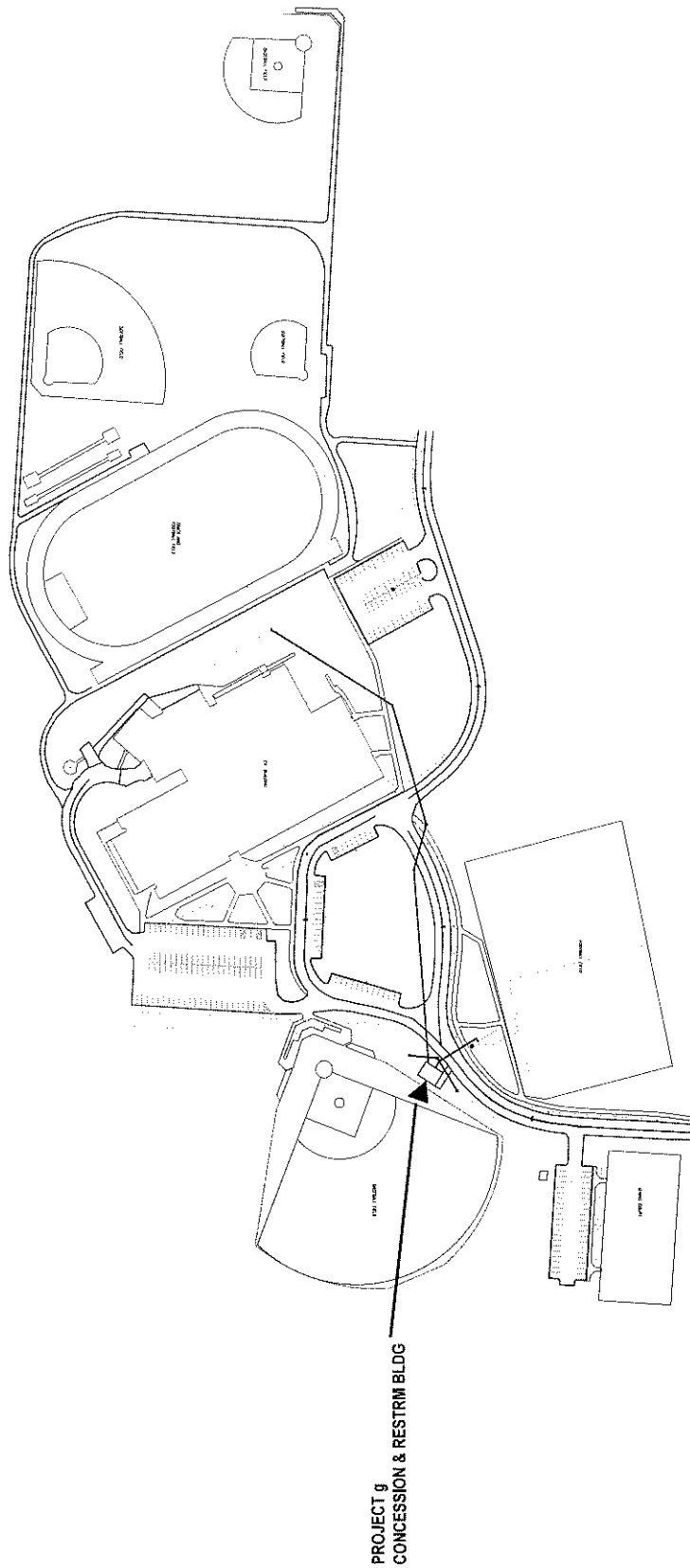
PART 2 - DRAWINGS:

- Item 1-3 Vol. 1, SHEET X1.0
A. **ADD in Title:** "PROJECT-g CONCESSIONS & RESTROOM BLDB, 2300 BALDWIN RD."
- Item 1-4 Vol. 1, SHEET X1.1
A. **REVISE in Master Index of Drawings – Volume 1:** Sheet titles X1.0 Vol. 1, X1.1 Vol. 1, CI1.3, CI1.4, CI2.1, CI3.2, CI4.1, Aa1.2, Aa9.1, FS1., FS.2, FS.3, Sa2.0, Fa1.11, Pa1.11, Ta0.1, Ta0.2 to match the sheet titles in each corresponding border.
- Item 1-5 Vol. 1, SHEET X1.2
A. **ADD:** BALDWIN ROAD SITE PLAN, see A-SK01.
- Item 1-6 Vol. 1, SHEET Xa1X
A. **REVISE in Sub Index of Drawings – Volume 1:** Sheet titles Xa1X, T0.01 and T0.02 to match the sheet titles in each corresponding border. Sheets Pa1.11 and Pa1.11F sheet order exchanged.
- Item 1-7 Vol. 1, SHEET Aa1.1
A. **RE-ISSUE:** See clouded revisions. Plan legend revised to be similar on all sheets.
- Item 1-8 Vol. 1, SHEET Aa2.1
A. **DELETE:** Remove a106a door reference from RCP Plan 1.
- Item 1-9 Vol. 1, SHEET Aa2.1
A. **REVISE:** There are two references to section 3/Aa4.1. Change the left reference to 2/Aa4.1.
- Item 1-10 Vol. 1, SHEET Aa3.1
A. **REVISE:** Elevation 3, change louver note to read, "38" W X 24" H louver by HVAC".
- Item 1-11 Vol. 1, SHEET Aa3.1
A. **REVISE:** Elevation 2, omit left louver and note. Change right louver note to read, "38" W X 18" H louver by HVAC".
- Item 1-12 Vol. 1, SHEET Aa3.1
A. **DELETE:** Elevation 1, remove signage NIC notations, 2 Pirate logos, RAIDERS block lettering and revision cloud. This is to clarify that signage on the back of the press box will not be in this contract.
- Item 1-13 Vol. 1, SHEET Aa4.1
A. **REVISE:** There are two section 4 titles indicated. Change the left section on the sheet to 5.
- Item 1-14 Vol. 1, SHEET Aa4.1
A. **REVISE:** Section 4, change detail reference 10/Ab5.1 to 11/Aa8.1.

- Item 1-15 Vol. 1, SHEET Aa4.1
A. **REVISE:** Section 4, change detail reference 9/Aa8.3 to 9/Aa8.2 in two locations.
- Item 1-16 Vol. 1, SHEET Aa4.1
A. **REVISE:** Section 4, change detail reference 8/Aa8.3 to 8/Aa8.2 in two locations.
- Item 1-17 Vol. 1, SHEET Aa4.1
A. **REVISE:** Section 1, added menu board NIC and revised 2 exterior fixture locations, see A-SK03.
- Item 1-18 Vol. 1, SHEET Aa7.1
A. **REPLACE:** Door & Frame Schedule attached, see A-SK02.
- Item 1-19 Vol. 1, SHEET Aa8.1
A. **REVISE:** Section 12, change dashed line to solid line for safe. The safe is to be provided under Section 10 80 00.
- Item 1-20 Vol. 1, SHEET Aa8.1
A. **REVISE:** Section 5, missing information provided, see A-SK04.
- Item 1-21 Vol. 1, SHEET Aa8.2
A. **REVISE:** Fixture mounting height schedule modified, see A-SK05.
- Item 1-22 Vol. 1, SHEET Aa8.2
A. **REVISE:** Fixture mounting height schedule modified, see A-SK06.
- Item 1-23 Vol. 1, SHEET Aa8.3
A. **DELETE:** Bollard detail 5/Aa8.3.
- Item 1-24 Vol. 2, SHEET Ac1.1
A. **REVISE:** Plan 1, add casework elevation markers, see A-SK07.
- Item 1-25 Vol. 2, SHEET Ac1.3
A. **CLARIFICATION:** Legend, Tennis court surface Not in Contract,
- Item 1-26 Vol. 2, SHEET Ac8.2
A. **RE-ISSUE:** Delete elevation 16, 22 and 23. Elevation 13 relocated from sheet Ac9.1.
- Item 1-27 Vol. 2, SHEET Ac9.1
A. **DELETE:** Elevation 1 moved to sheet Ac8.2 and re-named Elevation 13.

PART 3 - ATTACHMENTS:

Architectural Sketches (8 ½ x 11): A-SK01-A-SK07
Architectural Sheet: Aa1.1, Ac8.2



NO SCALE

BALDWIN ROAD SITE, 2300 BALDWIN ROAD, REYNOLDSBURG OHIO 43068

PROJECT g
CONCESSION & RESTRIM BLDG

300 Spruce Street
Suite 300
Columbus, Ohio 43215

Phone: (614) 461-4664
Fax: (614) 280-8881
www.moodynolan.com

LFO ATHLETIC &
ECO LAB PROJECTS
REYNOLDSBURG CITY
SCHOOLS
7244 EAST MAIN STREET
REYNOLDSBURG, OH 43068

ISSUED WITH ADDENDUM 1	SHEET REVISED X1.2
SKETCH NUMBER A-SK01	
PROJ # 08177.1	DRAWN BY DBW
DATE 3/25/11	

Door & Frame Schedule

NO.	DOOR		DOOR SIZE	FRAME TYPE	FRAME MAT.	GLASS	FIRE RTG.	HDN. SET	DETAILS			REMARKS
	TYPE	MATERIAL							HEAD	JAMB	SILL	
a100A	B	FRP	3'-0" X 7'-2"	2	ALUM			7	5/Aa7.1	4/Aa7.1	2/Aa7.1	
a100X	C	5T5T	8'-0" X 4'-4"					8		11/Aa7.1		ROLLING COUNTER DOOR
a100XX	C	5T5T	8'-0" X 4'-4"					8		11/Aa7.1		ROLLING COUNTER DOOR
a100XXX	C	5T5T	8'-0" X 4'-4"					8		11/Aa7.1		ROLLING COUNTER DOOR
a100XXXX	C	5T5T	8'-0" X 4'-4"					8		11/Aa7.1		ROLLING COUNTER DOOR
a100B	B	FRP	3'-0" X 7'-2"	2	ALUM			7	5/Aa7.1	4/Aa7.1	2/Aa7.1	
a100C	B	FRP	3'-0" X 7'-2"	2	ALUM			7	5/Aa7.1	4/Aa7.1	2/Aa7.1	
a100D	B	FRP	3'-0" X 7'-2"	2	ALUM			2	5/Aa7.1	4/Aa7.1	2/Aa7.1	
a100E	A	FRP	PR 3'-4" X 7'-2"	1	ALUM				5/Aa7.1	4/Aa7.1	2/Aa7.1	
a100F	B	FRP	3'-0" X 7'-2"	2	ALUM			6	14/Aa7.1	13/Aa7.1	1/Aa7.1	
a100G	B	FRP	3'-0" X 7'-2"	2	ALUM			9	5/Aa7.1	4/Aa7.1	2/Aa7.1	
a100H	B	FRP	3'-0" X 7'-2"	2	ALUM			5	14/Aa7.1	13/Aa7.1	1/Aa7.1	
a100J	B	FRP	3'-0" X 7'-2"	2	ALUM			6	14/Aa7.1	13/Aa7.1	1/Aa7.1	
a100K	B	FRP	3'-0" X 7'-2"	2	ALUM			6	14/Aa7.1	13/Aa7.1	1/Aa7.1	
a100L	B	FRP	3'-0" X 7'-2"	2	ALUM			3	5/Aa7.1	4/Aa7.1	2/Aa7.1	
a100M	B	FRP	3'-0" X 7'-2"	2	ALUM			1	5/Aa7.1	4/Aa7.1	2/Aa7.1	
a100N	B	FRP	3'-0" X 7'-2"	2	ALUM			2	5/Aa7.1	4/Aa7.1	2/Aa7.1	
a100O	D	ALUM	7'-10" X 8'-8"						10/Aa7.1	9/Aa7.1		SECTIONAL OVERHEAD DOOR
a100P	B	FRP	3'-0" X 7'-2"	2	ALUM			2	5/Aa7.1	4/Aa7.1	2/Aa7.1	
a100Q	A	FRP	PR 3'-4" X 7'-2"	1	ALUM				5/Aa7.1	4/Aa7.1	2/Aa7.1	
a100R	B	FRP	3'-0" X 7'-2"	2	ALUM			1	5/Aa7.1	4/Aa7.1	2/Aa7.1	
a100S	B	FRP	3'-0" X 7'-2"	2	ALUM			1	5/Aa7.1	4/Aa7.1	2/Aa7.1	
a100T	B	FRP	3'-0" X 7'-2"	2	ALUM			5	14/Aa7.1	13/Aa7.1	1/Aa7.1	

MOODY·NOLAN, INC.

architecture | civil engineering | interior architecture

300 Spruce Street
Suite 300

Columbus, Ohio 43215

Phone: (614) 461-4664

Fax: (614) 280-8881

www.moodynolan.com

LFO ATHLETIC &
ECO LAB PROJECTS
REYNOLDSBURG CITY
SCHOOLS

7244 EAST MAIN STREET
REYNOLDSBURG, OH 43068

ISSUED WITH
ADDENDUM 1

SHEET REVISED
Aa7.1

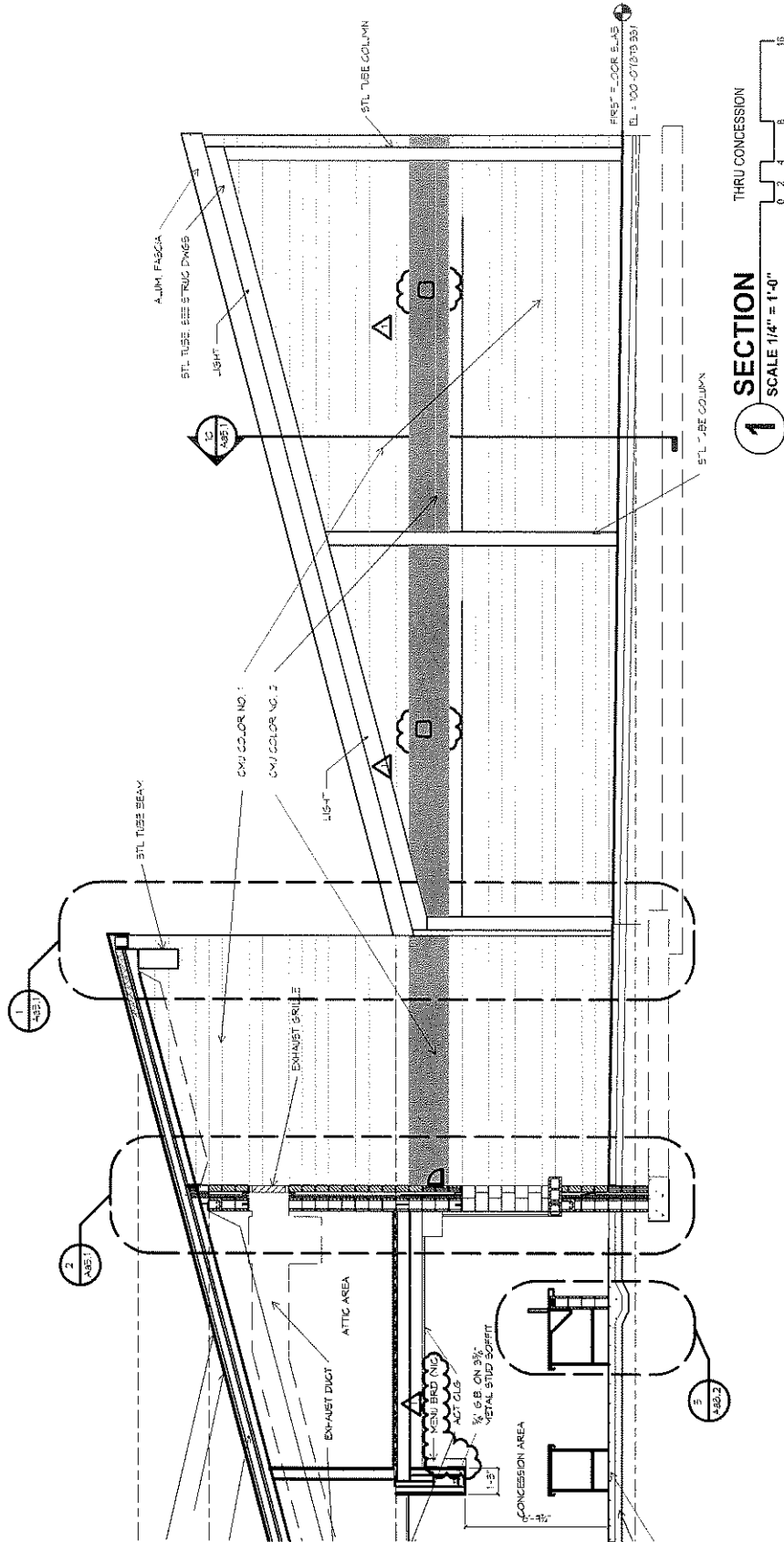
SKETCH NUMBER

A-SK02

PROJ #
08177.1

DRAWN BY
JK5

DATE
3/25/11

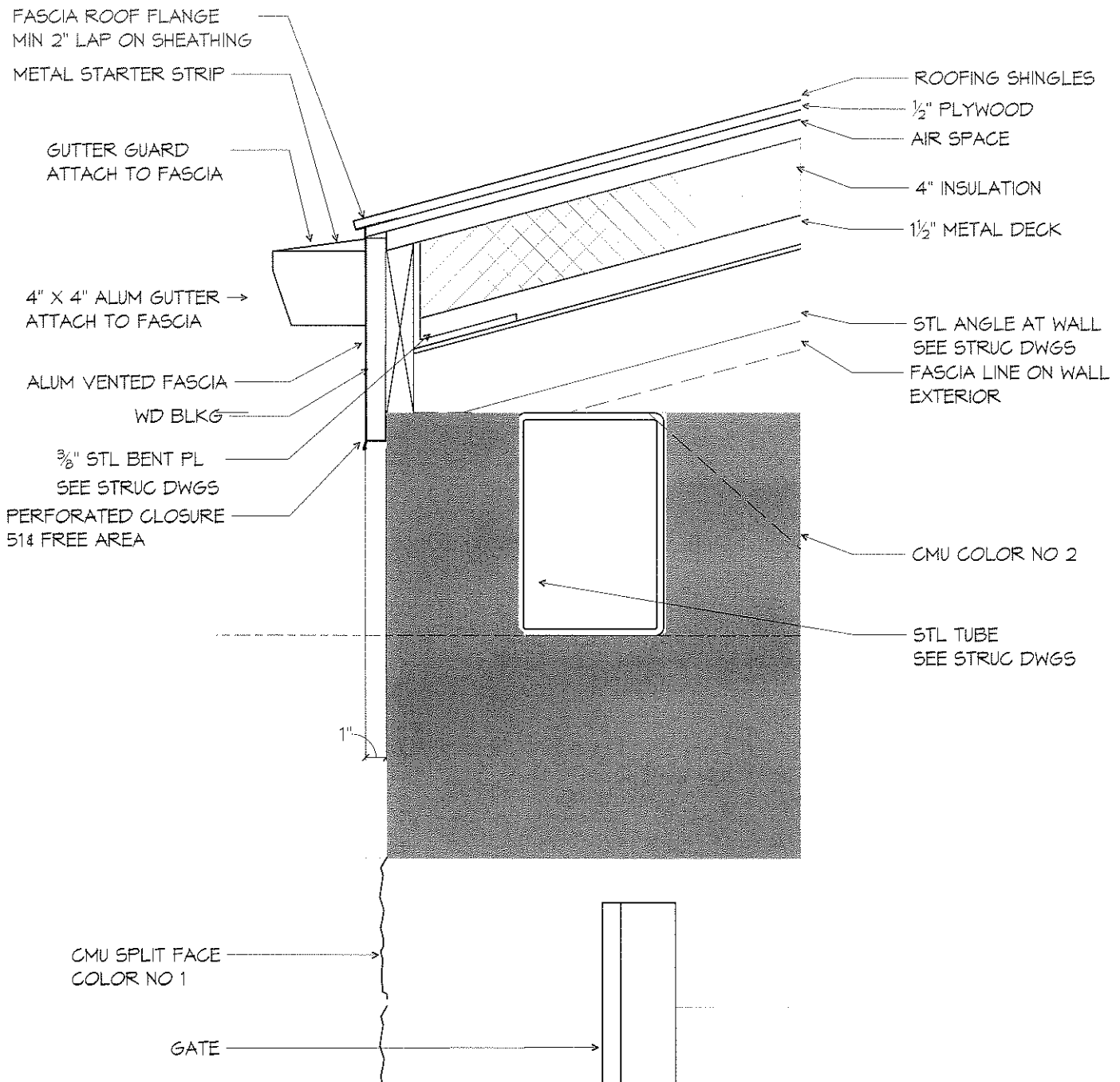


1 SECTION
 THRU CONCESSION
 SCALE 1/4" = 1'-0"

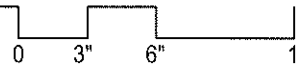
MOODY·NOLAN, INC.
 architecture | civil engineering | interior architecture
 300 Spruce Street Phone: (614) 461-4664
 Suite 300 Fax: (614) 280-8881
 Columbus, Ohio 43215 www.moodynolan.com

LFO ATHLETIC &
 ECO LAB PROJECTS
 REYNOLDSBURG CITY
 SCHOOLS
 7244 EAST MAIN STREET
 REYNOLDSBURG, OH 43068

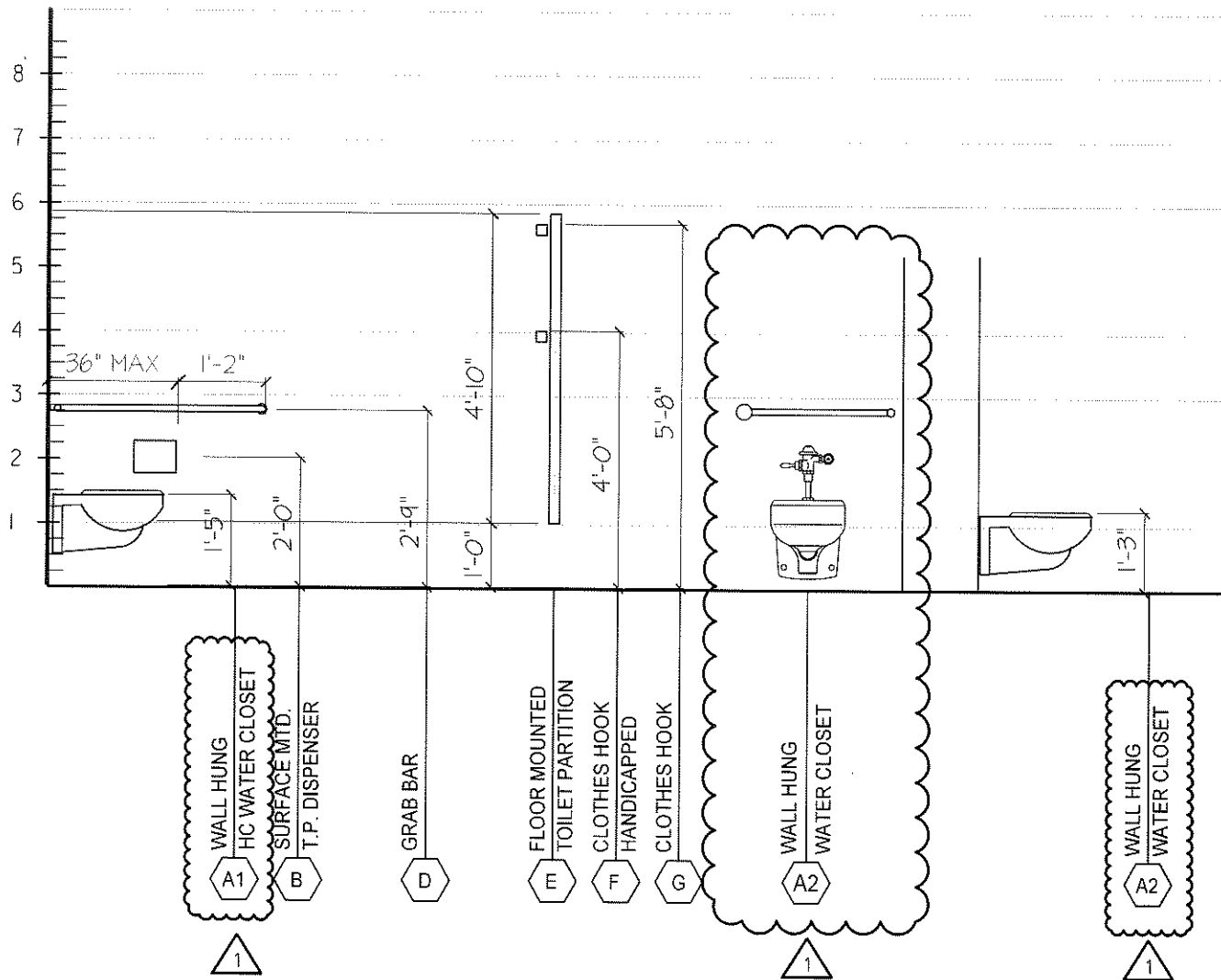
ISSUED WITH ADDENDUM 1	SHEET REVISED Aa7.1	
SKETCH NUMBER A-SK03		
PROJ # 08177.1	DRAWN BY JKS	DATE 3/25/11



5 **DETAIL**
 SCALE 1 1/2" = 1'-0"



MOODY·NOLAN, INC. architecture civil engineering interior architecture 300 Spruce Street Suite 300 Columbus, Ohio 43215 Phone: (614) 461-4664 Fax: (614) 280-8881 www.moodynolan.com	LFO ATHLETIC & ECO LAB PROJECTS REYNOLDSBURG CITY SCHOOLS 7244 EAST MAIN STREET REYNOLDSBURG, OH 43068	ISSUED WITH ADDENDUM 1	SHEET REVISED Aa7.1
	SKETCH NUMBER A-SK04		
	PROJ # 08177.1	DRAWN BY JK5	DATE 3/25/11

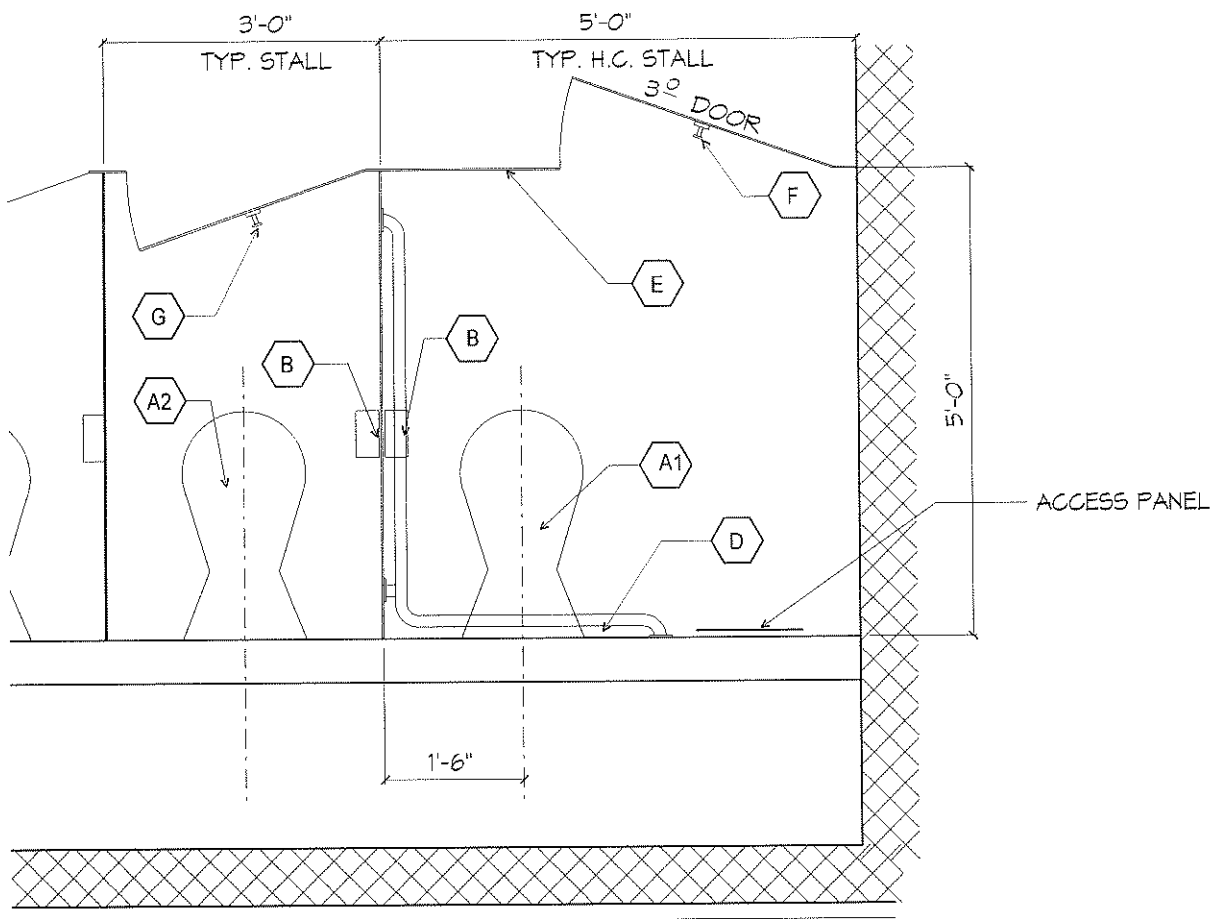


MOODY·NOLAN, INC.
 architecture | civil engineering | interior architecture
 300 Spruce Street Phone: (614) 461-4664
 Suite 300 Fax: (614) 280-8881
 Columbus, Ohio 43215 www.moodynolan.com

LFO ATHLETIC &
 ECO LAB PROJECTS
 REYNOLDSBURG CITY
 SCHOOLS
 7244 EAST MAIN STREET
 REYNOLDSBURG, OH 43068

ISSUED WITH ADDENDUM 1	SHEET REVISED Aa7.1
SKETCH NUMBER A-SK05	
PROJ # 00177.1	DRAWN BY JKS
DATE 3/25/11	

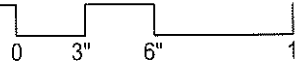
NOTE:
ALL ACCESSORIES TYP.
FOR ALL STALLS



11 **DETAIL**

ENLARGED TOILET RM

SCALE 1/2" = 1'-0"



MOODY·NOLAN, INC.
architecture | civil engineering | interior architecture
300 Spruce Street Phone: (614) 461-4664
Suite 300 Fax: (614) 280-8881
Columbus, Ohio 43215 www.moodynolan.com

LFO ATHLETIC &
ECO LAB PROJECTS
REYNOLDSBURG CITY
SCHOOLS
7244 EAST MAIN STREET
REYNOLDSBURG, OH 43068

ISSUED WITH ADDENDUM 1	SHEET REVISED Aa7.1	
SKETCH NUMBER A-SK06		
PROJ # 00177.1	DRAWN BY JKS	DATE 3/25/11

